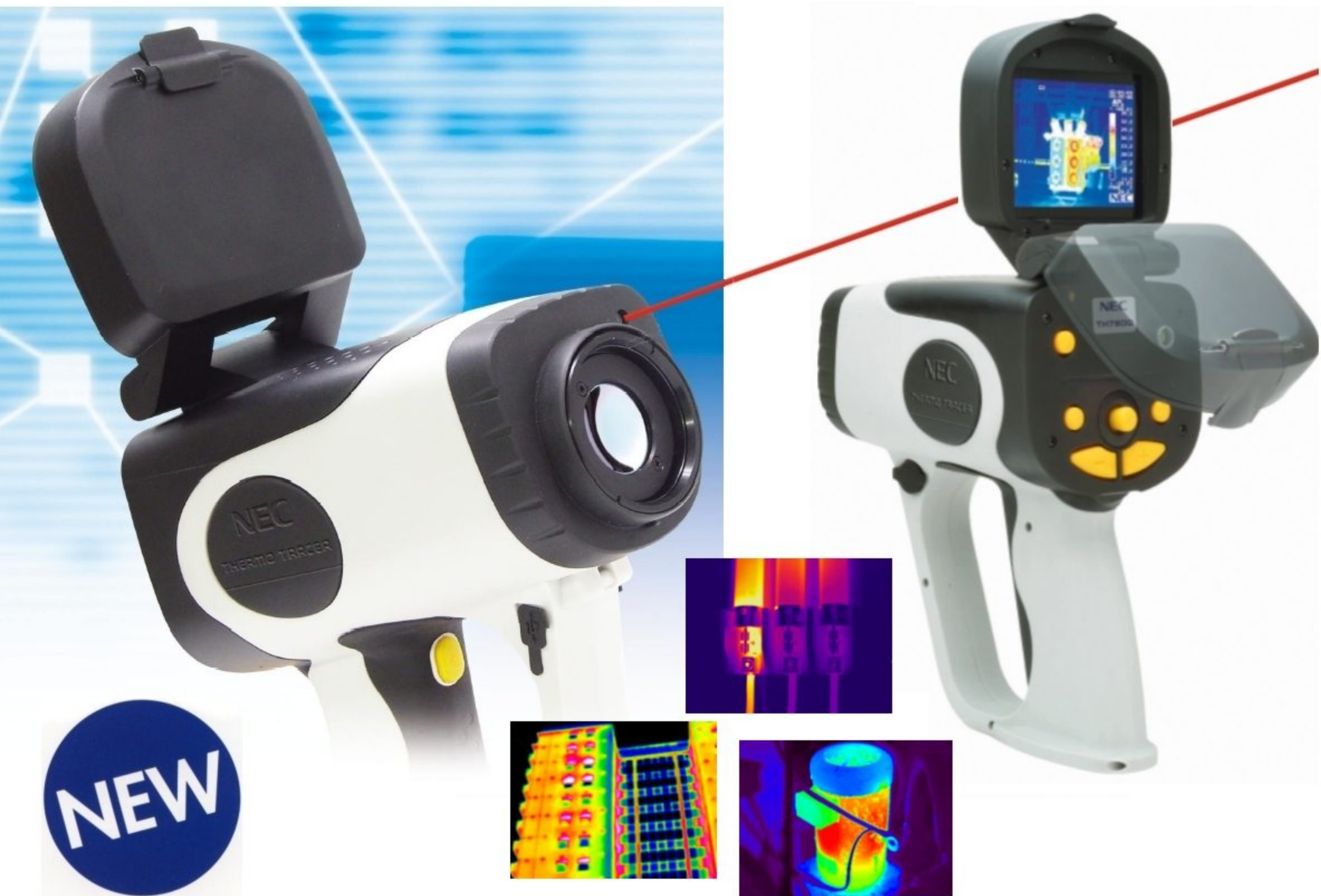


Infrared Thermal Imager  
Thermo Tracer  
**TH7700**

*"exceptional low price"*

**NEC**

**Affordable with High Quality Image**



**NEW**

**High quality image**

320×240 pixel radiometric Uncooled Focal Plane Array equipped

**Flip-up 3.5 inch LCD**

Adjustable for suitable angle to your eye position

**Laser pointer**

Shows measuring position

**Easy to hold**

Single hand control with either right or left hand

**Operability**

Operates for 2.5 hours with rechargeable battery

**Power saving**

Stand-by and auto shut-down functions to save power consumption

**Large memory capacity**

Stores 400 images in the internal flash memory

**Transfers images to PC via USB2.0**

**Robust**

Dust/splash-proof IP54  
Shock 294m/s<sup>2</sup>(30G)  
Vibration 29.4m/s<sup>2</sup>(3G)



**NEC San-ei Instruments, Ltd.**

## Specifications

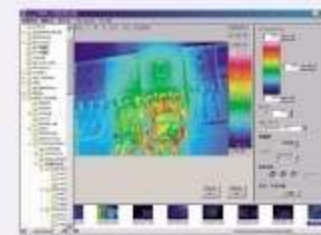
TH7700	
Measuring range Range 1 Range 2	-20°C to 250°C -20°C to 100°C 0°C to 250°C
Resolution	<0.1°C(at 30°C, range 1)
Accuracy	±2°C or ±2% of reading whichever greater
Infrared Detector	Uncooled focal plane array (microbolometer)
Spectral range	8 to 14 μm
I.F.O.V.	1.5mrad
Focusing range	30cm to infinity
Field of view	27.0°(H) x 20.0°(V)-5%
Frame time	8.5 frames/s
Display	3.5 inch LCD monitor with auto switch
Thermal image pixels	320 (H) x 240 (V) pixels
A/D resolution	14 bits
Measuring functions	Run/Freeze
Emissivity correction	0.10 to 1.00 (at 0.01 step) 1 point
Environment temperature correction	Provided(including interval NUC)
Display functions	Display color : color/monochrome, positive/negative Gradation : 16, 32, 64, 128, 256 Color palette : rainbow, brightness, shine, hot-iron, medical, fine Battery monitor
Image processing	Variable level/sense temperature display at center point
Image storage	400 images on internal flash memory
Interface	USB2.0
Power saving	Stand-by, auto-shutdown
Laser pointer	Class 2 (1mW/635nm red)
Operating temperature humidity	-15 to 45°C, 90% RH or less (not condensed)
Storage temperature humidity	-40 to 70°C, 90% RH or less (not condensed)
Power supply	AC adaptor: 100 to 240V AC, 7.2V DC
Shock & vibration	Shock: 294m/s <sup>2</sup> (IEC60068-2-27), Vibration: 29.4m/s <sup>2</sup> (IEC60068-2-6)
Environmental protection	IP54 (IEC60529)
Dimensions & weight	102(W) x 217(H) x 205(D) mm (excluding projections), 1.3kg (including battery)
Standard accessories	AC adaptor, Battery pack (2pcs), battery charger, USB cable, lens cap, wrist strap, carrying case, viewer software, operation manual

Note : \*1 Calibration range 0 to 100°C, range other than the calibration range is theoretical value.  
\*2 Calibration range 0 to 250°C, range other than the calibration range is theoretical value.

## Applicable Software

### Viewer Software TH78-719 (standard)

- Download thermal image from the internal memory to PC via USB2.0.
- Display thermal image thumbnail (Windows Explorer), thermal image replay, image preview and save or save as.
- Setup level, sense, span, color palette, gradation, page and new folder.
- Edit such as multi-point temperature display, multi-point emissivity display, and saving image in BMP, JPEG, or AVI.

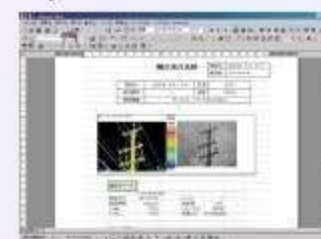


### Report Generator TH91-713 (optional)

- Making simple report with thermal image with temperature data on MS Word
- Replay thermal image, visual image and voice annotation and save or save as.
- Save in BMP or JPEG
- Setup level, sense, span, emissivity, page, color palette, gradation, multi-sense, isothermal band, cursor, box and waveform display, etc.
- Transfer temperature data to MS Excel
- Display max/min temperature in a box or full screen.

### Image Processor TH91-711 (optional)

- Image Processor TH91-711 works on TH91-713
- Analyze thermal image and data with histogram, trend graph, multi-waveform, and max/min search, etc.
- Read zoom (x5), filtering, smoothing, emissivity correction, full screen subtraction, box subtraction and specified area subtraction



### Infrared Images Analyzing Software (free Download)

Infrared real time (pre-) trigger- and recorder software for thermo image recording with interactive temperature, time, internal, external, interval trigger functions. For viewing and evaluating of stored IR image sequences and measurement data quantitative studio cutting tools are provided.

These permit a comfortable editing, allocation, cutting and chaining of relevant thermal image information, measurement data and events.

The displaying and recording of geometric object temperatures, emissivity corrections, trigger conditions and trigger temperatures are processed while saving data to hard disc in real time.

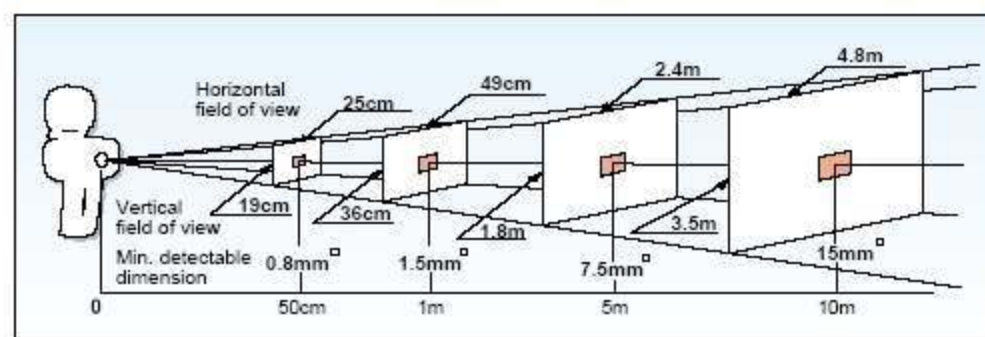
File format converters for, AVI, MPEG, BMP, PCX, TIFF, DRI, SVT, SIT a.m.m. are included.

It is easy to process embedded daylight JPGs from the daylight camera and WAV speech annotations.

Data consistency to other MS-Windows based applications is provided. All information can easily be processed and be outputted to a report.



## Field of View Diagram (Thermal image)



\*Specifications subject to change without prior notice.



**CAUTION  
FOR SAFETY**

Please read "WARNING" & "CAUTION" in the operation manual attached to the product carefully for proper operation before using the product.

**NEC San-ei Instruments, Ltd.**

1-25-12, Akebono-cho, Tachikawa-shi,  
Tokyo 190-8537, Japan

Exclusive importer for Central Europe:

ebs ATuS GmbH - NEC Infrared Systems - [www.ebs-thermography.com](http://www.ebs-thermography.com)

Your local partner:

Infrared Technology  
Vlamingstraat 4  
B-8560 Wevelgem

[www.infraroodgids.com](http://www.infraroodgids.com)

**NEC**